

Exhibit 2 – FBI Surface Danger Zone Diagram

REAL ESTATE APPRAISAL AND RELATED STUDIES

FOR

FEDERAL BUREAU OF INVESTIGATION
ROOM 6875, JEH F.B.I. BUILDING
10TH & PENNSYLVANIA AVENUES, N.W.
WASHINGTON, D.C. 20535

OF

FBI FIREARMS TRAINING FACILITY
IN
NORTH CHICAGO, ILLINOIS

AS OF

APRIL 25, 1986

BY

(P)



(P)



(BEST COPY)



FBI002103

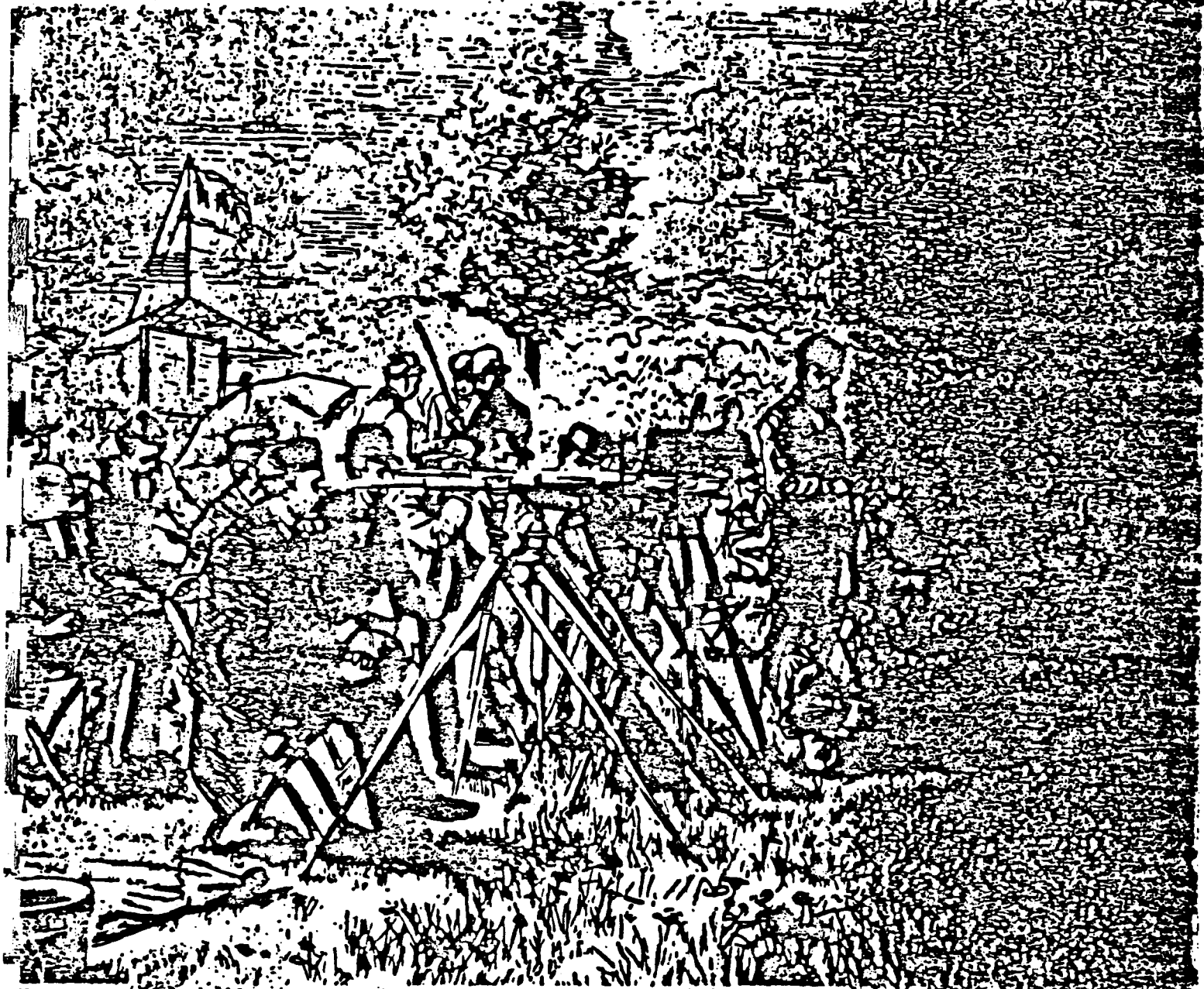
LIST OF EXHIBITS

- Exhibit "A" - Engineering Report: "Assess the extent of Environmental Contamination and Consequences of the Proposed Disposal of the Rifle Range"
- Exhibit "B" - Portion of U.S. Government Navigation Chart, showing extent of danger zone in Lake Michigan.
- Exhibit "C" - Portion of Copy of National Rifle Association pamphlet: "High Power Rifle Ranges"
- Exhibit "D" - Map showing location of 65 acre Lake County property.
- Exhibit "E" - Map showing location of Vernon Hills Military Reservation.
- Exhibit "F" - Map showing location of Fox Valley Rifle Range, Inc.
- Exhibit "G" - Data on four representative rural acreage sales.
- Exhibit "H" - Brochure depicting existing and planned development of Waukegan lakefront.
- Exhibit "I" - Chamber of Commerce brochures giving county and area data.
- Exhibit "J" - Architectural floor plans, construction cross sections, and details.
- Exhibit "K" - Warranty Deed for Sale No. 1.
- Exhibit "L" - Sales depicted on Waukegan - Lake County Street Map and Directory.
- Exhibit "M" - List of contractors that furnished current cost data for this report.
- Exhibit "N" - Zoning Map and Zoning Description.
- Exhibit "O" - Experience and Qualifications of Leo R. Mayers, M.A.I.
- Exhibit "P" - Photographs of two possible sites for relocating firing range.
- Exhibit "Q" - Current list of schools taught at the FBI Range.
- Exhibit "R" - Additional aerial photographs of subject property and nearby areas.



NATIONAL RIFLE ASSOCIATION FIELD SERVICES DIVISION

HIGH POWER RIFLE RANGES



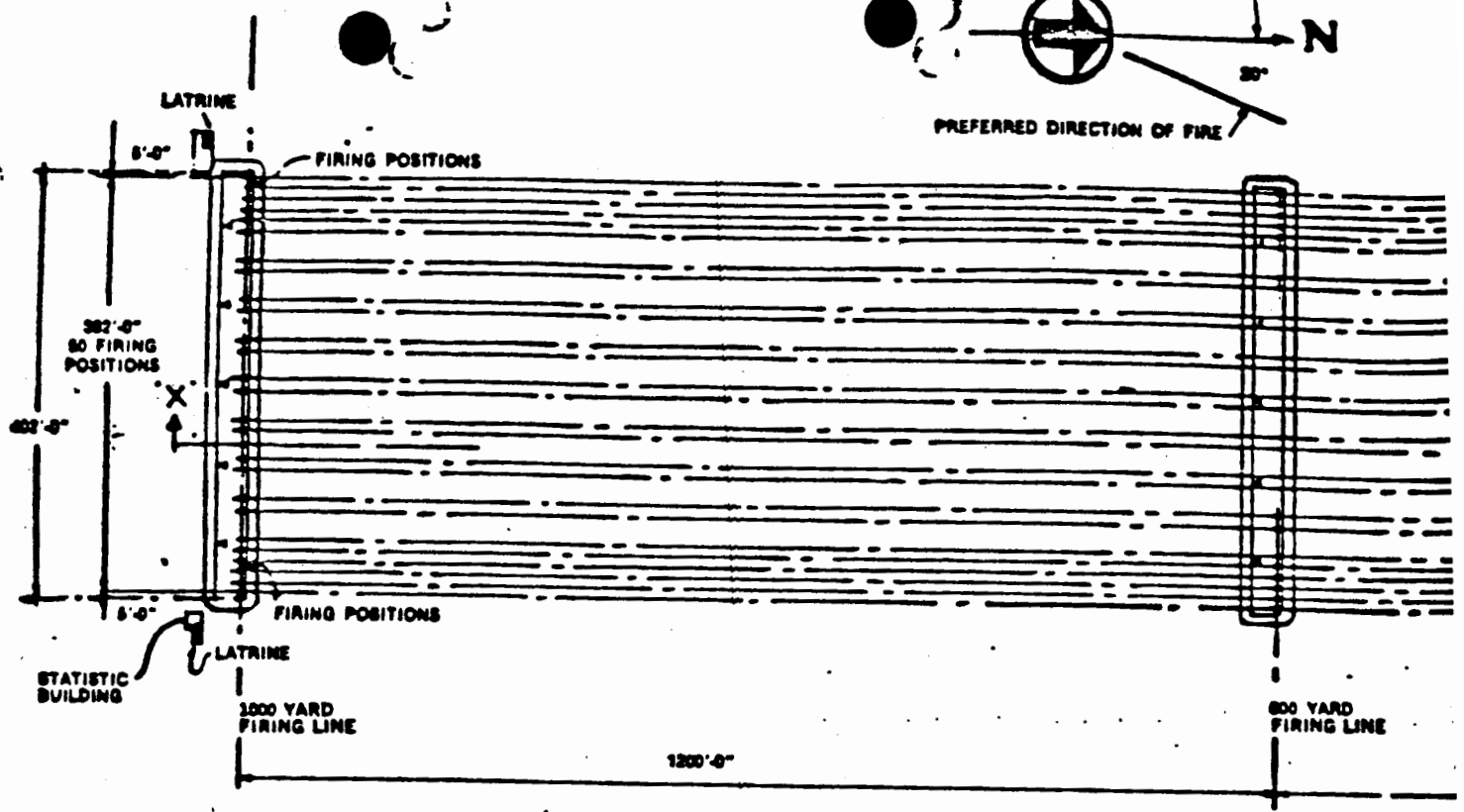
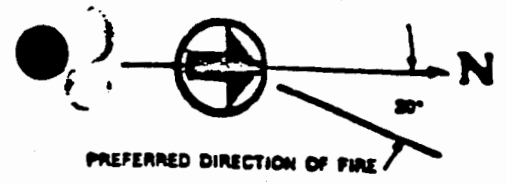
Produced by the National Rifle Association of America, 1600 Rhode Island Ave., N.W., Washington, D.C. 20036.

Up-to-date information and drawings on the building and operation of shooting ranges are but a few of the services and benefits enjoyed by NRA members.

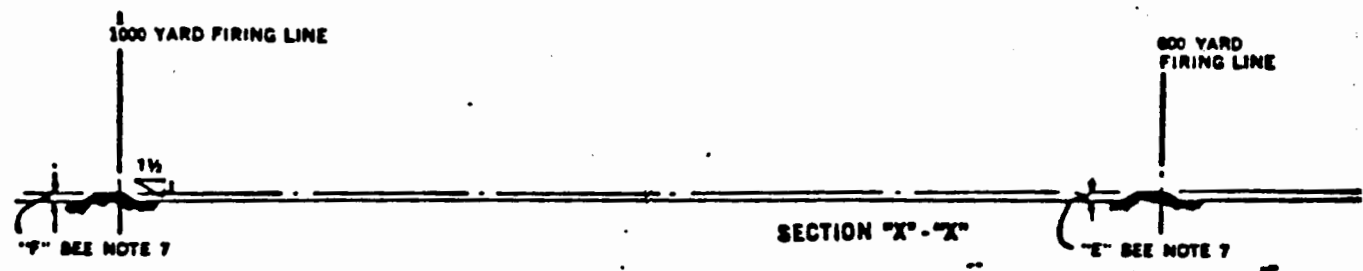
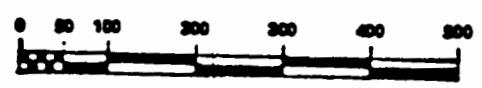
Membership in the NRA is available to any reputable citizen of the United States upon nomination by a current member.

(BEST COPY)

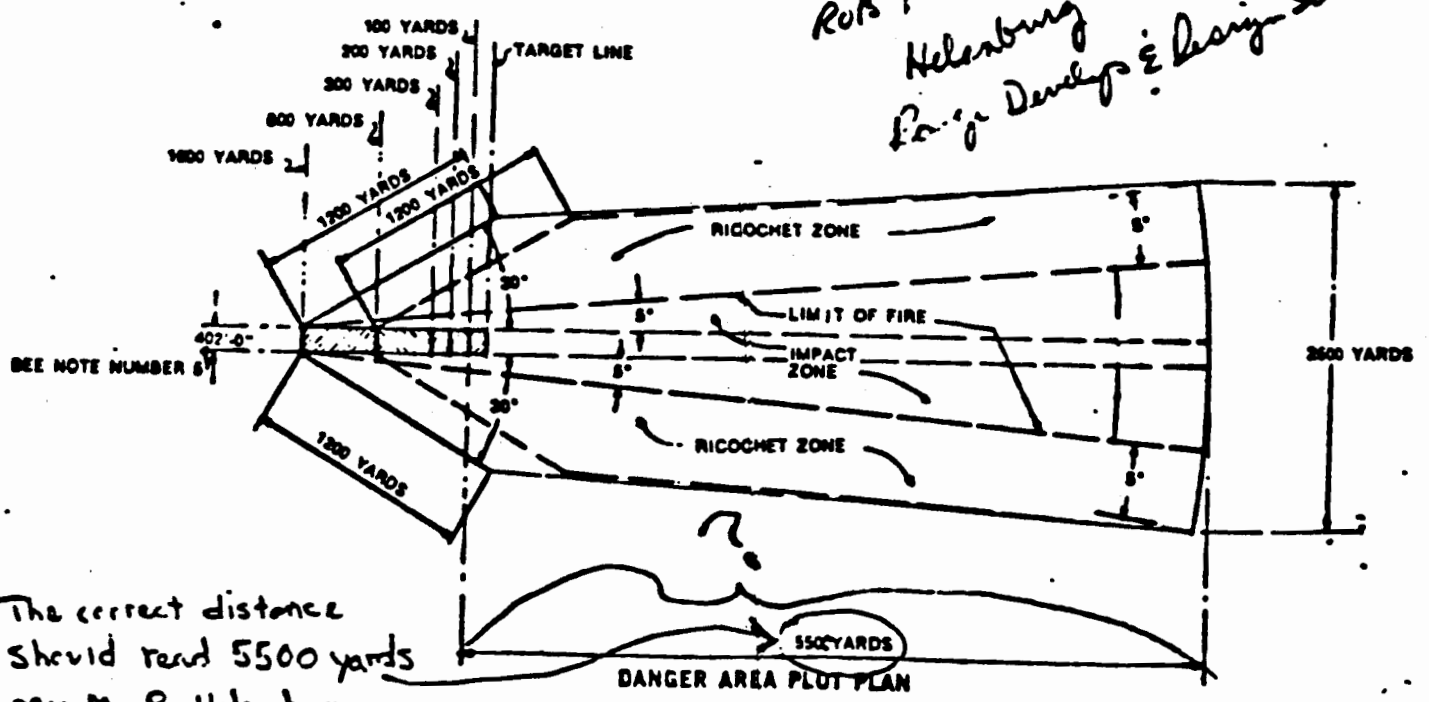
81350
1 B1002 136



PLAN-FIFTY POSITION RANGE



*Rob Helanburg
Range Develop & Design Sect.*

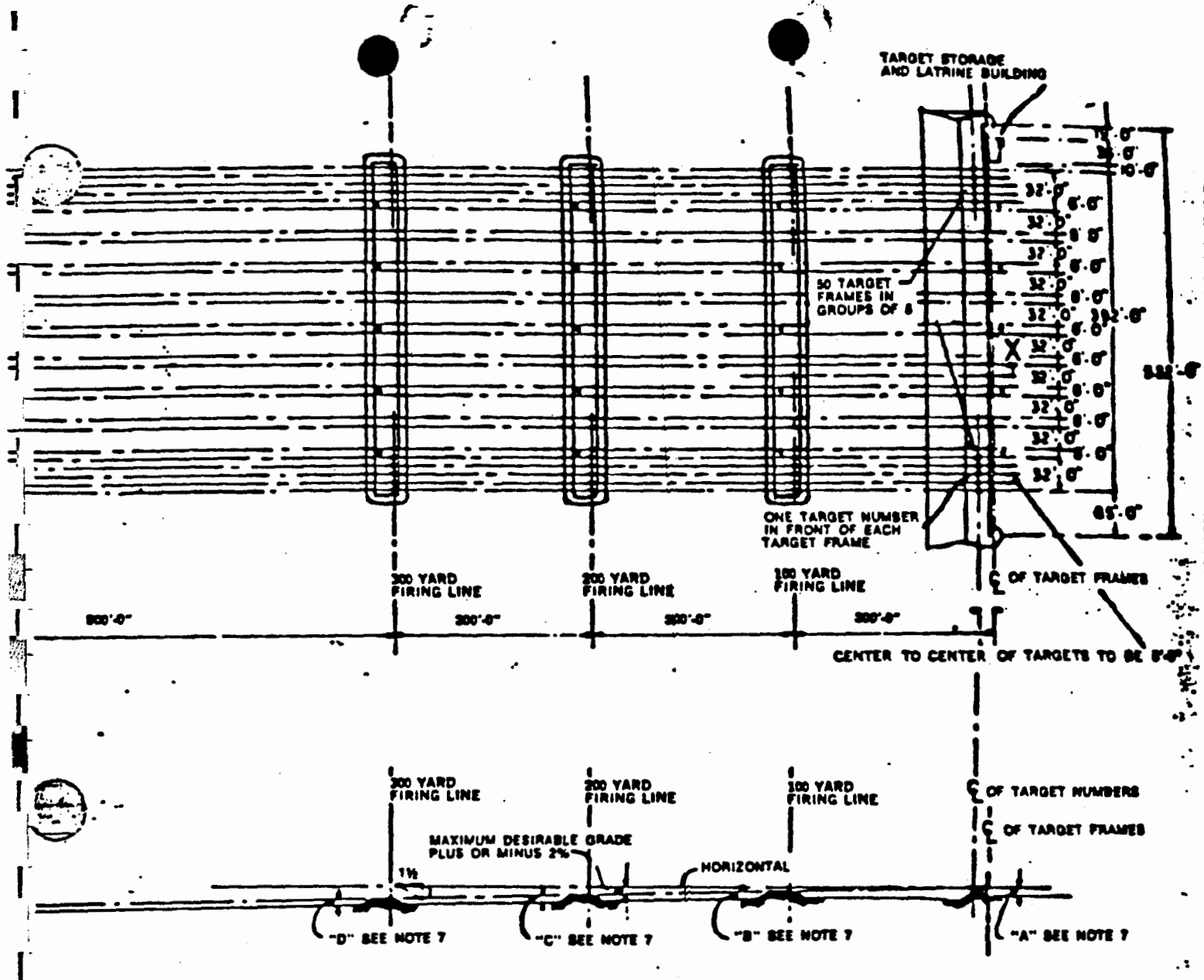


DANGER AREA PLOT PLAN

NO SCALE
BASED ON CALIBER M77 MATCH AMMUNITION RICOCHET ZONE AS SHOWN IS CONSIDERED ADEQUATE FOR SUBSTANTIALLY LEVEL OPEN DANGER ZONES

(BEST COPY)
11002107

The correct distance should read 5500 yards per Mr. R. Helanburg of N.R.A. confirmed 5-1-86 by [signature]



TARGET STORAGE AND LATRINE BUILDING

50 TARGET FRAMES IN GROUPS OF 5

ONE TARGET NUMBER IN FRONT OF EACH TARGET FRAME

300 YARD FIRING LINE

200 YARD FIRING LINE

100 YARD FIRING LINE

C OF TARGET FRAMES

CENTER TO CENTER OF TARGETS TO BE 8'-0"

300 YARD FIRING LINE

200 YARD FIRING LINE

100 YARD FIRING LINE

C OF TARGET NUMBERS

C OF TARGET FRAMES

MAXIMUM DESIRABLE GRADE PLUS OR MINUS 2%

HORIZONTAL

"D" SEE NOTE 7

"C" SEE NOTE 7

"B" SEE NOTE 7

"A" SEE NOTE 7

PROGRAMMING & MASTER PLANNING GUIDES

1. EACH FIRING POSITION TO PROVIDE VIEW OF TARGET NUMBER AND FREE FIELD OF FIRE FROM ALL POSITIONS (PRONE TO STANDING)
2. IN SELECTING AND USING SITES, AFR 50-13 AND CONTENTS OF THIS MANUAL WILL BE CONSULTED AND COMPLIED WITH.
3. PROVIDE PUBLIC ADDRESS SYSTEM WITH SUFFICIENT NUMBER OF SPEAKERS TO VERBALLY CONTROL RANGE.
4. THE TARGET STORAGE HOUSE, STATISTICAL BUILDING AND LATRINE BUILDINGS TO BE OF WOOD FRAME, MINIMUM CONSTRUCTION.
5. RANGE MAY BE BUILT IN INCREMENTS OF 5 POSITIONS.
6. RANGES WITH 5 TO 25 POSITIONS REQUIRE ONE LATRINE AT FIRING-POSITION END RANGES WITH MORE THAN 25 POSITIONS REQUIRE TWO LATRINES AT FIRING POSITION END OTHER STRUCTURES REQUIRED AS SHOWN REGARDLESS OF NUMBER OF POSITIONS.
7. DIMENSIONS "A", "B", "C", "D", "E" AND "F" WILL VARY WITH SITE CONDITIONS BUT MUST BE PLANNED TO MINIMIZE GRADING.
8. WHEN 100 AND 200-YARD FIRING POSITIONS ARE NOT FEASIBLE, DUE TO UNSUITABLE TERRAIN, 300-YARD POSITIONS MAY BE SUBSTITUTED.
9. THE NUMBER OF FIRING POSITIONS ON THE 100-YARD LINE MAY BE REDUCED IT MAY BE DESIRABLE TO HAVE FEWER FIRING POSITIONS ON THIS LINE THAN ON THE OTHER FIRING LINES.
10. AT INSTALLATIONS REQUIRING SMALL ARMS TRAINING WITH THE .30 CALIBER OR OTHER SERVICE RIFLE WILL REQUIRE A 100-YARD FIRING LINE. SEE AFR 50-8.
11. FOR CONSTRUCTION DETAILS OF TARGET BUTTS, REFER TO TEXT OF THIS MANUAL.

UTILITY REQUIREMENTS

ELECTRICITY	SEW
WATER	NONE
SEWAGE	LATRINE
GAS	NONE
STEAM	NONE

HEATING REQUIREMENT

NONE

AREA FOR PROGRAMMING

GROSS AREA	800 SQ. FT.
STATISTICAL BUILDING	400
TARGET STORAGE HOUSE	200
LATRINES (240 x 3)	720

PROGRAMMING COST ESTIMATES WILL BE BASED ON A UNIT OF 5 POSITIONS AREAS SHOWN ABOVE, IF REQUIRED, WILL BE INCLUDED AS SUPPORT ITEMS. THIS DRAWING SUPERSEDES DEFINITIVE DRAWINGS NO AD 84-01-04 AIR FORCE CONTROL NO. 110-400-03

DATE APPROVED

DEPARTMENT OF THE AIR FORCE
HEADQUARTERS UNITED STATES AIR FORCE
VICTOR B. SPECTOR AND ASSOCIATES
ARCHITECTS-ENGINEERS • FALLS CHURCH, VIRGINIA

RANGE, HIGH POWER RIFLE
OUTDOOR
(SEE POSITION, OUTDOOR)

APPROVED **AD 84-01-08**

SCALE AS SHOWN SHEET 1 OF 1
DATE 20 DEC 83

LEGEND

- TELEPHONE LOCATION
- FIRING POSITION
- TARGET FRAME
- TARGET NUMBER
- STRUCTURES